



C U S T O M

S E A T I N G

O F F I C E - U P H O L S T E R Y - H O M E



C U S T O M
S E A T I N G L T D



THINGS TO KNOW

BACK SIZES

8	W40CM	H40CM
80	W44CM	H50CM
800	W49CM	H60CM
HA05	W44CM	H50CM
HA15	W45CM	H60CM
SM4	W45CM	H60CM
SM6	W45CM	H70CM

SEAT SIZES

STD SEAT	D45CM	W48CM
LAG SEAT	D48CM	W50CM
FULL SEAT	D52CM	W56CM

GAS LIFTS AND H/D MECH & SM MECH ARE TESTED TO 150KG/23 STONE

RE UPHOLSTER STANDAD CHAIR £20 + FABRIC QOR

GAS LIFT HEIGHT

ECO	STD SEAT	45CM-56CM
ECO	SEAT SLIDE	48CM-59CM
U SERIES	STD/LRG SEAT	47CM-57CM
U SERIES	SEAT SLIDE	47CM-60CM
E10	12" GAS	51CM-72CM
E10	14" GAS	61CM-85CM
U10	12" GAS	58CM-78CM
U10	14" GAS	65CM-92CM



OPTIONAL EXTRAS

RING ARMS

CODE - RA



HIGH ADJ ARMS

CODE - HAA



FOLDING ARMS

CODE - FA



4D MULTI FUNCTION ARM

CODE - 4DMFA

HEIGHT ADJUSTABLE ARM
PAD MOVEMENT:

- FOWARD & BACK
- SIDE TO SIDE
- PARTIAL ROTATION

BUILT FOR COMFORT



LUMBAR SUPPORT

CODE - LS



ALUMINIUM BASE & GAS LIFT

CODE - AB



FOOT RING

CODE - FR



18"/460MM FOOT RING WITH HEIGHT ADJUSTMENT HANDWHEEL. SUITABLE FOR TALLER/DRAUGHTSMAN STYLE CHAIRS AND WITH GAS LIFTS OF 12" AND ABOVE.

MOULDED FOAMS



SEAT BACK



SEAT PAD



H A V E R I N G S E R I E S

HIGH BACK

CODE - HA05

H/D 3 LEVER MECH
27" PYRAMID BASE
LARGE SEAT
MOULDED FOAMS
7" DROP GAS LIFT
60M CASTORS

BAND 1 -
BAND 2 -
BAND 3 -
BAND 4 -
BAND 5 -
VINYL -



FULL BACK

CODE - HA15

H/D 3 LEVER MECH
27" PYRAMID BASE
LARGE SEAT
MOULDED FOAMS
7" DROP GAS LIFT
60M CASTORS

BAND 1 -
BAND 2 -
BAND 3 -
BAND 4 -
BAND 5 -
VINYL -



MESH BACK

CODE - HA10

H/D 2 LEVER MECH
27" PYRAMID BASE GLIDE
LARGE SEAT
MOULDED FOAMS
12"/14" GAS LIFT
FOOT RING
GLIDES

BAND 1 -
BAND 2 -
BAND 3 -
BAND 4 -
BAND 5 -
VINYL -



MESH BACK

CODE - HAMESH

H/D 3 LEVER MECH
27" PYRAMID BASE
LARGE SEAT
MOULDED FOAMS
7" DROP GAS
60M CASTORS

BAND 1 -
BAND 2 -
BAND 3 -
BAND 4 -
BAND 5 -
VINYL -



FABRIC BANDS

BAND 1 -
TARGET
BAND 2 -
PHOENIX, CITADEL, ERA, RIVET
BAND 3 -
ADVANTAGE, MANHATTEN
BAND 4 -
EXTREME PLUS, CHATEAU & SPRINT, X2, MAIN LINE
PLUS
BAND 5 -
BLAZER, AQUARIS, INTERVENE PLUS, HI TECH &
HEMP, OXYGEN

VINYL

ALL OTHER FABRIC CALL QIS FOR
PRICES

OPTIONAL EXTRAS

RING ARMS -
HIGHT ADJ ARMS -
FOLDING ARMS -
4D MULTI FUNCTION ARM -
SLIDING SEAT -
PUMP UP LUMBAR -
ALUMINIUM BASE -
HEADREST -
H/D SYNCHRO -
MEMORY FOAM SEAT -
BREAT LOADED & UNLOADED
CASTORS -



SPECIALIST CHAIR

BARKING & DAGENHAM CHAIR

CODE: HA - LBBD / HA - HCC

HIGH BACK
H/D 3 LEVER MECH
FOLDING ARM
SLIDING SEAT
LARGE SEAT
MOULDED FOAMS
LUMBAR PUMP
27" BLACK PYRAMID BASE & 60 M



BAND 1 -
BAND 2 -
BAND 3 -
BAND 4 -
BAND 5 -
VINYL -
+ £10 UPHOLSTERED OUTER BACK

ISLINGTON CHAIR

CODE - ISLINGTON CHAIR

H/D 3 LEVER MECH
FOLDING ARM
SLIDING SEAT
LARGE SEAT
MOULDED FOAMS
LUMBAR PUMP
27" BLACK PYRAMID BASE & 60 M



BAND 1 -
BAND 2 -
BAND 3 -
BAND 4 -
BAND 5 -
VINYL -

RAYTHON CHAIR

CODE - HAMISH RAYTHON

MESH BACK
H/D 3 LEVER MECH
FOLDING ARMS
SLIDING SEAT
LARGE SEAT
MOULDED FOAMS



BAND 1 -
BAND 2 -
BAND 3 -
BAND 4 -
BAND 5 -
VINYL -

FABRIC BANDS

BAND 1 -
TARGET
BAND 2 -
PHOENIX, CITADEL, ERA, RIVET
BAND 3 -
ADVANTAGE, MANHATTEN
BAND 4 -
EXTREME PLUS, CHATEAU & SPRINT, X2, MAIN LINE PLUS
BAND 5 -
BLAZER, AQUARIS, INTERVENE PLUS, HI TECH & HEMP,
OXYGEN

VINYL

ALL OTHER FABRIC CALL
QIS FOR PRICES



U S E R I E S

MEDIUM BACK

CODE - U8

H/D 3 LEVER MECH
25° PYRAMID BASE
STANDARD SEAT
MOULDED FOAMS
8" DROP GAS
60M CASTORS



BAND 1 -
BAND 2 -
BAND 3 -
BAND 4 -
BAND 5 -
VINYL -

HIGH BACK

CODE - U80

H/D 3 LEVER MECH
25° PYRAMID BASE
STANDARD SEAT
MOULDED FOAMS
8" DROP GAS
60M CASTORS



BAND 1 -
BAND 2 -
BAND 3 -
BAND 4 -
BAND 5 -
VINYL -

DRAUGHTSMAN

CODE - U10

H/D 2 LEVER MECH
25° PYRAMID BASE
STANDARD SEAT
MOULDED FOAMS
FOOT RING
GLIDES



BAND 1 -
BAND 2 -
BAND 3 -
BAND 4 -
BAND 5 -
VINYL -

FULL BACK

CODE - U800

H/D 3 LEVER MECH
25° PYRAMID BASE
STANDARD SEAT
MOULDED FOAMS
8" DROP GAS
60M CASTORS



BAND 1 -
BAND 2 -
BAND 3 -
BAND 4 -
BAND 5 -
VINYL -

OPTIONAL EXTRAS

- RING ARMS -
- HIGHT ADJ ARMS -
- FOLDING ARMS -
- 4D MULTI FUNCTION ARM -
- SLIDING SEAT -
- PUMP UP LUMBAR -
- LARGE SEAT UPGRADE -
- ALUMINIUM BASE -
- HEADREST -
- H/D SYNCHRO -
- MEMORY FOAM SEAT -

FABRIC BANDS

- BAND 1 -**
TARGET
- BAND 2 -**
PHOENIX, CITADEL, ERA, RIVET
- BAND 3 -**
ADVANTAGE, MANHATTEN
- BAND 4 -**
EXTREME PLUS, CHATEAU & SPRINT, X2, MAIN LINE PLUS
- BAND 5 -**
BLAZER, AQUARIS, INTERVENE PLUS, HI TECH & HEMP,
OXYGEN

VINYL

ALL OTHER FABRIC CALL QIS FOR PRICES



S M S E R I E S

SM4 MEDIUM BACK ERGO

CODE - SM4ERGO

SYNCHRO MECH - TENTION ADJ
4 X POSITIVE CLICK TENSION ADJUSTMENT
4 X LOCKABLE PIVOT POINTS
27" PYRAMID BASE
7" DROP GAS LIFT
LARGE SEAT FOAM
MOULDED FOAMS
SLIDING SEAT - 55MM ADJ

BAND 1 -
BAND 2 -
BAND 3 -
BAND 4 -
BAND 5 -
VINYL -
MLP -



ARMS OPTIONAL EXTRA

SM6 HIGH BACK ERGO

CODE - SM6ERGO

SYNCHRO MECH - TENTION ADJ
4 X POSITIVE CLICK TENSION ADJUSTMENT
4 X LOCKABLE PIVOT POINTS
27" PYRAMID BASE
7" DROP GAS LIFT
LARGE SEAT FOAM
MOULDED FOAMS
SLIDING SEAT - 55MM ADJ

BAND 1 -
BAND 2 -
BAND 3 -
BAND 4 -
BAND 5 -
VINYL -
MLP -



ARMS OPTIONAL EXTRA



ARMS & HEAD REST OPTIONAL EXTRA

OPTIONAL EXTRAS

RING ARMS -
HIGHT ADJ ARMS -
FOLDING ARMS -
4D MULTI FUNCTION ARM -
PUMP UP LUMBAR -
ALUMINIUM BASE -
HEADREST -
MEMORY FOAM SEAT -

FABRIC BANDS

BAND 1 -
TARGET
BAND 2 -
PHOENIX, CITADEL, ERA, RIVET
BAND 3 -
ADVANTAGE, MANHATTEN
BAND 4 -
EXTREME PLUS, CHATEAU & SPRINT, X2, MAIN LINE PLUS
BAND 5 -
BLAZER, AQUARIS, INTERVENE PLUS, HI TECH & HEMP,
OXYGEN

VINYL

ALL OTHER FABRIC CALL QIS FOR PRICES



E C O S E R I E S

MEDIUM BACK

CODE - E8

2 LEAVER MECH
STANDAD SEAT PLY
25" FLAT BASE & CASTORS

BAND 1 -
BAND 2 -
BAND 3 -
BAND 4 -
BAND 5 -
VITA -



HIGH BACK

CODE - E80

2 LEAVER MECH
STANDAD SEAT PLY
25" FLAT BASE & CASTORS

BAND 1 -
BAND 2 -
BAND 3 -
BAND 4 -
BAND 5 -
VITA -



FULL BACK

CODE - E800

2 LEAVER MECH
STANDAD SEAT PLY
25" FLAT BASE & CASTORS

BAND 1 -
BAND 2 -
BAND 3 -
BAND 4 -
BAND 5 -
VITA -



MESH BACK

CODE - EMESH

2 LEAVER MECH
STANDAD SEAT PLY
25" FLAT BASE & CASTORS

BAND 1 -
BAND 2 -
BAND 3 -
BAND 4 -
BAND 5 -
VINYL -



TAMPER PROOF STUDENT GAS HEIGHT ADJ ONLY

CODE - ETAMPER

QUOTE ON REQUEST

7 DAYS



DRAGHTSMAN

CODE - E10

MEDIUM BACK
2 LEVER ARCH
STANDAD SEAT PLY
FOOT RING
25" FLAT BASE
GLIDES

BAND 1 -
BAND 2 -
BAND 3 -
BAND 4 -
BAND 5 -
VINYL -



OPTIONAL EXTRAS

RING ARMS -
HIGHT ADJ ARMS -
FOLDING ARMS -
4D MULTI FUNCTION ARM -
SLIDING SEAT -
PUMP UP LUMBAR -
TO ADD 3 LEVER -

FABRIC BANDS

BAND 1 -
TARGET
BAND 2 -
PHOENIX, CITADEL, ERA, RIVET
BAND 3 -
ADVANTAGE, MANHATTEN
BAND 4 -
EXTREME PLUS, CHATEAU & SPRINT, X2, MAIN LINE PLUS
BAND 5 -
BLAZER, AQUARIS, INTERVENE PLUS, HI TECH & HEMP,
OXYGEN
VINYL

ALL OTHER FABRIC
CALL QIS FOR
PRICES



MEETING CHAIRS

4 LEG STACKING CHAIR BLACK

CODE - U5BL

4 LEGGED CHAIR

ON A BLACK FRAME
UPHOLSTERED SEAT & BACK
WITHOUT ARMS

BAND 1 -
BAND 2 -
BAND 3 -
BAND 4 -
BAND 5 -
VINYL -



4 LEG STACKING CHAIR CHROME

CODE - U5CH

4 LEGGED CHAIR

ON A CHROME FRAME
UPHOLSTERED SEAT & BACK
WITHOUT ARMS

BAND 1 -
BAND 2 -
BAND 3 -
BAND 4 -
BAND 5 -
VINYL -



ECO CANTILEVER BLACK

CODE - E6

ECO CANTILEVER CHAIR

ON A BLACK FRAME
UPHOLSTERED SEAT & BACK
MEDIUM BACK

BAND 1 -
BAND 2 -
BAND 3 -
BAND 4 -
BAND 5 -
VINYL -



ECO CANTILEVER CHROME

CODE - E6CH

ECO CANTILEVER CHAIR

ON A CHROME FRAME
UPHOLSTERED SEAT & BACK
MEDIUM BACK

BAND 1 -
BAND 2 -
BAND 3 -
BAND 4 -
BAND 5 -
VINYL -



FABRIC BANDS

BAND 1 -
TARGET
BAND 2 -
PHOENIX, CITADEL, ERA, RIVET
BAND 3 -
ADVANTAGE, MANHATTEN
BAND 4 -
EXTREME PLUS, CHATEAU & SPRINT, X2, MAIN LINE PLUS
BAND 5 -
BLAZER, AQUARIS, INTERVENE PLUS, HI TECH & HEMP,
OXYGEN

VINYL

ALL OTHER FABRIC CALL
QIS FOR PRICES

ARMS FOR STACKING CHAIRS





RECEPTION SEATS

ALL AVAILABLE QUOTE ON REQUEST

U13 STANDARD FEATURES FABRIC

LAMINATED TIMBER
FRAME
STACKABLE X 5
NATURAL BEECH FINISH

UPHOLSTERED SEAT &
BACK
W530 D565 H840
SH440MM
VINYL



U14 STANDARD FEATURES FABRIC

LAMINATED TIMBER
FRAME
STACKABLE X 5
NATURAL BEECH FINISH

UPHOLSTERED SEAT &
BACK
W510 D565 H840
SH440MM
VINYL



U17 STANDARD FEATURES FABRIC

LAMINATED TIMBER
FRAME
STACKABLE X 5
NATURAL BEECH FINISH

UPHOLSTERED SEAT &
BACK
W585 D590 H885
SH440MM
VINYL



U18 STANDARD FEATURES FABRIC

LAMINATED TIMBER
FRAME
STACKABLE X 5
NATURAL BEECH FINISH

UPHOLSTERED SEAT &
BACK
W585 D590 H885
SH440MM
VINYL



U19 STANDARD FEATURES FABRIC

LAMINATED TIMBER
FRAME
STACKABLE X 5
NATURAL BEECH FINISH

UPHOLSTERED SEAT &
BACK
W545 D555 H855
SH400MM
VINYL



U20 STANDARD FEATURES FABRIC

LAMINATED TIMBER
FRAME
STACKABLE X 5
NATURAL BEECH FINISH

UPHOLSTERED SEAT &
BACK
W545 D555 H855
SH400MM
VINYL



U21 RA STANDARD FEATURES FABRIC

LOW RECEPTION CHAIR
R/ARM
LAMINATED TIMBER
FRAME
NATURAL BEECH FINISH
FULLY UPHOLSTERED
W545 D555 H855
SH400MM
VINYL



U21 LA STANDARD FEATURES FABRIC

LOW RECEPTION CHAIR
R/ARM
LAMINATED TIMBER
FRAME
NATURAL BEECH FINISH
FULLY UPHOLSTERED
W545 D855 H855
SH400MM
VINYL



U24 STANDARD FEATURES

RECEPTION TABLE SMALL

NATURAL BEECH FINISH
W495 D485 H430MM



U25 STANDARD FEATURES

RECEPTION TABLE LARGE

NATURAL BEECH FINISH
W900 D485 H430MM



FABRIC BANDS

BAND 2 -
ERA, RIVET
BAND 3 -
ADVANTAGE, MANHATTEN
BAND 4 -
EXTREME PLUS, CHATEAU & SPRINT, X2
BAND 5 -
BLAZER, AQUARIS, INTERVENE PLUS, HI TECH & HEMP,
OXYGEN
VINYL
JUST COLOUR AND SPECTRUM

PRICES FOR ALL ITEMS LISTED AVAILABLE ON REQUEST

ALL OTHER FABRIC CALL
QIS FOR PRICES



MAYFAIR SOFAS

SINGLE SEAT UNIT

CODE - MF1

W - 790MM
D - 780MM
H - 750MM
SEAT HEIGHT - 420MM

BAND 2 -
BAND 4 -
BAND 5 -
VINYL -



TWO SEATER UNIT

CODE - MF2

W - 1380MM
D - 780MM
H - 750MM
SEAT HEIGHT - 420MM

BAND 2 -
BAND 4 -
BAND 5 -
VINYL -



THREE SEATER UNIT

CODE - MF3

W - 1990MM
D - 780MM
H - 750MM
SEAT HEIGHT - 420MM

BAND 2 -
BAND 4 -
BAND 5 -
VINYL -



L-SHAPED UNIT

CODE - MFC

PRICE AVAILBLE ON REQUEST FROM CUSTOM SEATING LTD

SIZE BESPOKE

SIZE BASED OFF MAYFAIR UNITS



FABRIC BANDS

BAND 2 -
PHOENIX, CITADEL, ERA, RIVET
BAND 4 -
EXTREME PLUS, CHATEAU & SPRINT, X2, MAIN LINE PLUS
BAND 5 -
BLAZER, AQUARIS, INTERVENE PLUS, HI TECH & HEMP, OXYGEN

MAINLINE PLUS BAND 4

VINYL

CHROME ADJUSTABLE FEET COME AS STANDAD -
OTHER FEET OPTIONS AVAILBLE

CUSTOM SIZING

WE CAN CUSTOMISE THE SIZING OF MAYFAIRS :

PRICING NEEDS TO BE QUOTED ON REQUEST



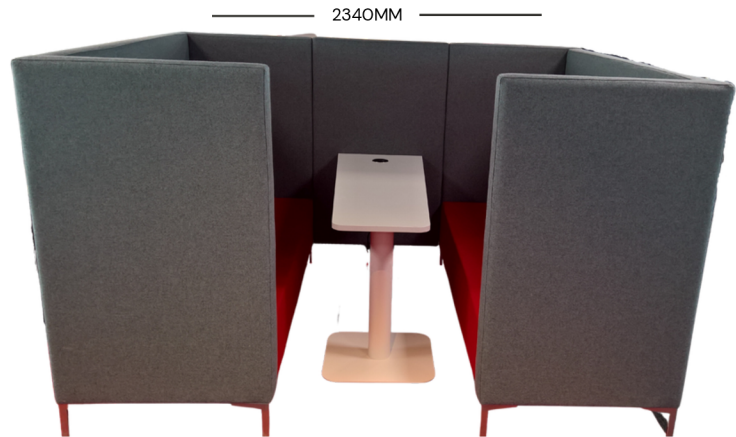
MAYFAIR BOOTHS / PODS

FOUR PERSON BOOTH

W - 1400MM
D - 780MM
H - 1370MM
SH - 420MM

CUSTOM SIZES ARE QOR

BAND 2 -
BAND 4 -
BAND 5 -
VINYL -



SIX PERSON BOOTH

W - 1990MM
D - 780MM
H - 1370MM
SH - 420MM

CUSTOM SIZES ARE QOR

BAND 2 -
BAND 4 -
BAND 5 -
VINYL -



ACCESSORIES / EXTRAS

PANEL INFIL BETWEEN BOOTH WITH PORT HOLE AS STANDAD

W - 780MM
W - 1350MM



OMEGA - £75.00

POWER TO TABLE OR BOOTH -

TABLE TOP WITH BASE -

MUST BE ORDERED BY UOS SUPPLIERS
SIZES TBA





LOW RECEPTION UNITS

CORNER UNIT

W - 700MM
H - 770MM
D - 700MM

BAND 2 -
BAND 4 -
BAND 5 -
VINYL -



THREE PERSON UNIT

W - 1830MM
H - 770MM
D - 700MM

BAND 2 -
BAND 4 -
BAND 5 -
VINYL -



TWO PERSON UNIT

W - 1210MM
H - 770MM
D - 700MM

BAND 2 -
BAND 4 -
BAND 5 -
VINYL -



SINGLE PERSON UNIT

W - 650MM
H - 770MM
D - 700MM

BAND 2 -
BAND 4 -
BAND 5 -
VINYL -



ALL UNITS CAN BE MADE TO CUSTOM SIZING - QOR



TUB CHAIRS

FABRIC BANDS

BAND 2 -
PHOENIX, CITADEL, ERA, RIVET

BAND 4 -
EXTREME PLUS, CHATEAU & SPRINT, X2, MAIN LINE PLUS

BAND 5 -
BLAZER, AQUARIS, INTERVENE PLUS, HI TECH & HEMP, OXYGEN

VINYL

ALL OTHER FABRIC CALL QIS FOR PRICES

SINGLE SEAT UNIT

W - 770MM
D - 600MM
H - 770MM
SEAT HEIGHT - 455MM



BAND 2 -
BAND 4 -
BAND 5 -
VINYL -



TWO SEATER UNIT

W - 1180MM
D - 600MM
H - 770MM
SEAT HEIGHT - 455MM



BAND 2 -
BAND 4 -
BAND 5 -
VINYL -

THREE SEATER UNIT

W - 1680MM
D - 600MM
H - 770MM
SEAT HEIGHT - 455MM



BAND 2 -
BAND 4 -
BAND 5 -
VINYL -



STOOLS

450 DIAMETER STOOL

CODE - STOOL

BAND 2 -
BAND 4 -
BAND 5 -

VINYL -



ORBIT STOOL

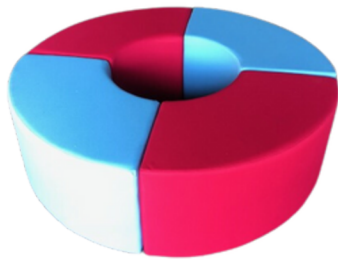
CODE - ORBIT

BAND 2 - £254.50
BAND 4 - £265.65
BAND 5 - £280.35

VINYL - £267.40



POLO STOOL



CODE - POLO

BAND 2 -
BAND 4 -
BAND 5 -

VINYL -

HEX STOOL

CODE - HEX



BAND 2 -
BAND 4 -
BAND 5 -

VINYL -

SQUARE STOOL

CODE - SQUARE

BAND 2 -
BAND 4 -
BAND 5 -

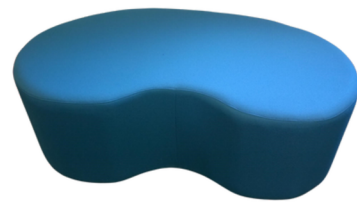
VINYL -

KIDNEY STOOL

CODE - KIDNEY

BAND 2 -
BAND 4 -
BAND 5 -

VINYL -



FABRIC BANDS

BAND 2 -
PHOENIX, CITADEL, ERA, RIVET

BAND 4 -
EXTREME PLUS, CHATEAU & SPRINT, X2, MAIN LINE PLUS

BAND 5 -
BLAZER, AQUARIS, INTERVENE PLUS, HI TECH & HEMP, OXYGEN

VINYL

ALL OTHER FABRIC CALL QIS FOR PRICES

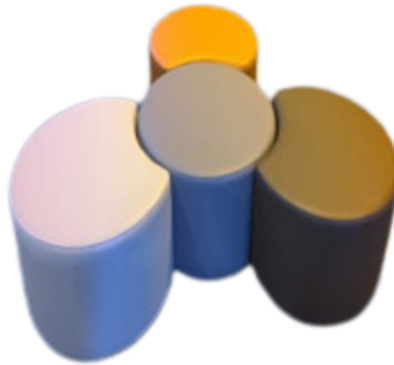


R O U N D S & M O O N S

800MM DIAMETER WITH OR
WITHOUT THE BITE

QUOTE ON REQUEST

BAND 1 -
BAND 2 -
BAND 3 -
BAND 4 -
BAND 5 -
VINYL -
MLP -



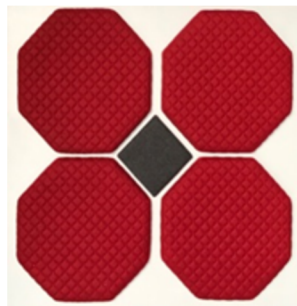
A C C O U S T I C P A N E L S

OCTOGON

560 X 560

BLAZER QUILTED QOR

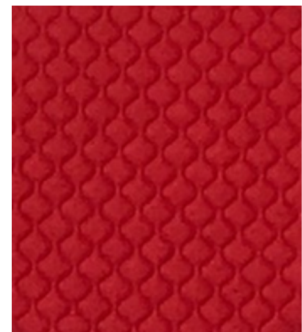
OTHER FABRICS
AVAILABLE QOR



PANEL

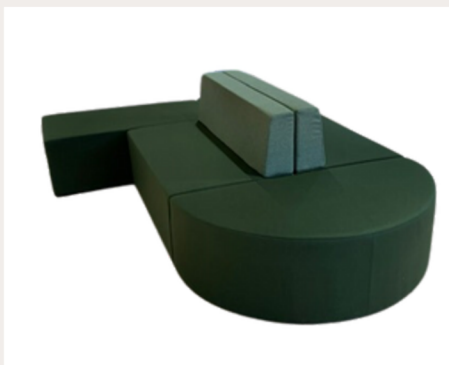
BLAZER QUILTED
600X600
BLAZER QUILTED
120X120

OTHER FABRICS
AVAILABLE QOR





C U S T O M S H O W C A S E





C U S T O M S H O W C A S E





C U S T O M
S E A T I N G L T D

CUSTOM SEATING BROOK FARM,
BROXTED ESTATE SUTTON,
WOODBIDGE SUFFOLK IP12 3HL

